



RADIANS®

HAND PROTECTION



RADIANS.COM • 901-388-7776

CATEGORIES



COATED PALM

P.4



COLD WEATHER

P.9



LEATHER

P.10



CUT PROTECTION

P.16



CUT PROTECTION SLEEVES

P.23



**DEWALT HAND PROTECTION
(ALL CATEGORIES)**

P.24



OTHER STYLES

P.31

HAND PROTECTION

Radians has aggressively expanded our line of hand protection to provide gloves that keep workers' hands protected from common workplace hazards. The National Safety Council estimates that the direct cost of a laceration is \$15,000-\$25,000 including care and missing six days of work, which is the average time off for a hand injury.

You can look to us for performance gloves that protect your workers' hands while not compromising comfort and dexterity. We offer a variety of materials and coatings for various job applications, including nitrile, latex, polyurethane coatings, and cut resistant fibers.



RADIANS®

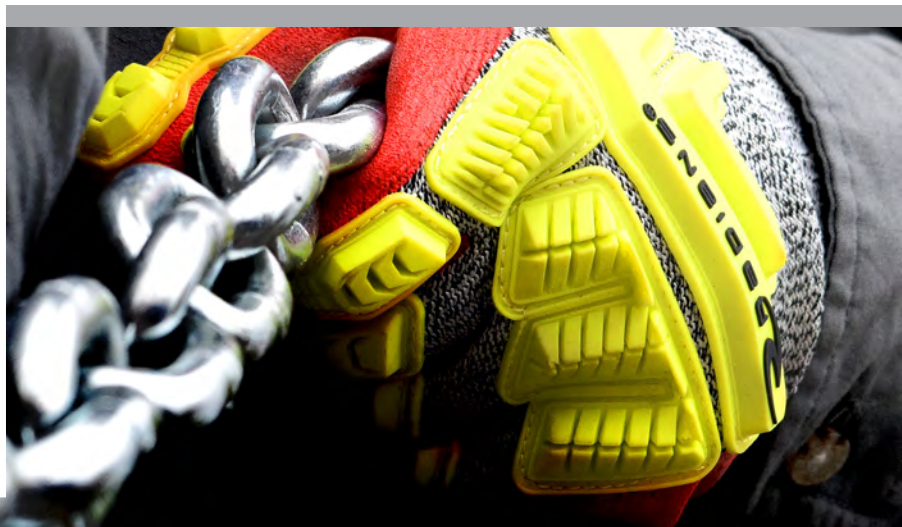
- Uncompromisable Protection
- Quality Performance
- Innovative Solutions

bellingham®
by RADIANS

- High Quality Industrial Gloves
- Built Tough For The Workplace
- Designed For Performance



- Trusted Brand
- Worldwide Marketing Support
- Premium Designs



GLOVE HANG TAG PROGRAM

FOR FAST, EASY, AND PROFESSIONAL RETAIL DISPLAY OF RADIANS GLOVES AT INDUSTRIAL STOREFRONTS.

- **FAST** Five business day turnaround.
- **EASY** You can place an order for a case of “tagged” gloves just as you would place an order for a case of “untagged” gloves.
- **ECONOMICAL** Competitive pricing.

MINIMUM ORDER REQUIREMENT IS ONE CASE

The minimum order is a case and the gloves in that case can include bulk packs of a dozen in multiple sizes. Keep in mind some of our cases include 72 gloves and some cases include 120 gloves. After a case is ordered, you may order more gloves by the dozen. Many of our competitors will only sell by the case, but Radians is more flexible allowing for dozen bulk pack purchases after the minimum case requirement has been satisfied.



GLOVE VENDING PROGRAM

Because PPE vending machines can increase worker safety and workplace efficiencies, Radians has expanded our hand protection line to include glove packaging for vending machines.

PROGRAM IS EASY TO USE AND EASY TO INSTALL

We offer three vending machine formats that take into consideration the size and features of the glove. After all, not all gloves can be rubber-banded, so we have three options:

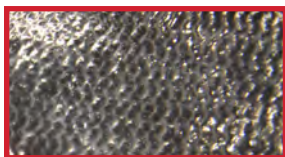
- **GLOVE-BANDED** (Rubber Banded): For customers not wanting plastic.
- **GLOVE-FOLDED** (Tri-Folded to fit in a smaller bag): For cut and non-cut coated gloves.
- **GLOVE-BAGGED** (Bagged Flat): For larger, bulkier gloves.



COATED GLOVES

To address specific work-related hand protection issues, Radians uses several different types of palm coatings: smooth nitrile, foam nitrile, sandy foam nitrile, foam latex, sandy foam latex, crinkle latex, and PU polyurethane. Palm coatings allow for better gripping capabilities and tactile sensation without losing dexterity.

COATING DESCRIPTIONS:



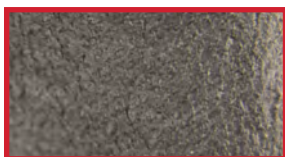
SMOOTH NITRILE

- Excellent Abrasion Resistance
- Synthetic Rubber, Latex Free
- Excellent Puncture Resistance
- Tactile Sensitivity and Flexible Grip



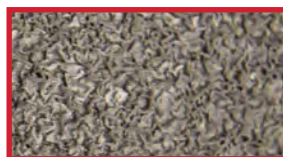
FOAM LATEX

- Micro Texture
- Better Breathability and Comfort
- Excellent Flexibility
- Resistant to Tears and Cuts



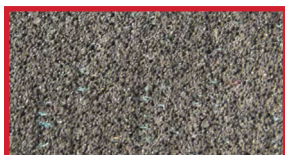
FOAM NITRILE

- Lightweight Micro Texture
- Good Grip in Wet or Dry Applications
- Breathable, Flexible and Porous
- Excellent Abrasion Resistance



SANDY FOAM LATEX

- Micro-Roughened Texture
- Better Breathability and Comfort
- Excellent Flexibility
- Resistant to Tears and Cuts



SANDY FOAM NITRILE

- Micro Roughened Texture
- Excellent Grip in Wet or Dry Applications
- Breathable, Flexible and Porous
- Excellent Abrasion Resistance



CRINKLE LATEX

- Rough Texture for Better Grip and Abrasion
- Better Breathability and Comfort
- Excellent Flexibility
- Resistant to Tears and Cuts



PU (POLYURETHANE)

- Semi-Smooth Texture
- Extremely Flexible
- Superior Dexterity
- Not as Durable as Nitrile or Latex



- Proprietary, Engineered Coating by Radians
- Flexible and Durable
- Provides Better Grip than Nitrile

FDG: WHY IS IT IMPORTANT?

When dealing with Foam, Micro Foam or Sandy Foam Nitrile to get the best grip you must give up some abrasion resistance and to get the best abrasion resistance you have to give up some grip.

With FDG you no longer must give up any of these. You get the **BEST OF BOTH WORLDS.**

GRIP

Good: Micro Foam Nitrile
Better: Foam Nitrile
Best: Sandy Foam Nitrile
Exceptional: **FDG®**

ABRASION

Good: Sandy Foam Nitrile
Better: Foam Nitrile
Best: Micro Foam Nitrile
Exceptional: **FDG®**



WARNING: Cancer and reproductive harm - www.P65warnings.ca.gov

When “longer lasting, higher abrasion, and better grip” matter to you, Radians delivers with its proprietary and engineered Flexible Durable Grip coating.

RWG31

M - XL

- 13 Ga HV Green Nylon Shell
- Double-Dipped FDG® Palm Coating

EN388:2016



- 4 - Abrasion
- 1 - Coup Test/Cut
- 2 - Tear
- 1 - Puncture
- X - ISO Cut Test

4 1 2 1 X



RWG32

M - XL

- 13 Ga Nylon Shell
- FDG® Palm Coating
- Waterproof Nitrile Coating

EN388:2016



- 4 - Abrasion
- 1 - Coup Test/Cut
- 3 - Tear
- 1 - Puncture
- X - ISO Cut Test

4 1 3 1 X



RWG33

M - XL

- 13 Ga Nylon Shell
- FDG® Palm Coating
- Nitrile Dots for Added Abrasion Protection

EN388:2016



- 4 - Abrasion
- 1 - Coup Test/Cut
- 4 - Tear
- 1 - Puncture
- X - ISO Cut Test

4 1 4 1 X



WARNING: Cancer and reproductive harm - www.P65warnings.ca.gov

sales@radians.com | www.radians.com | 877-723-4267

COATED GLOVES

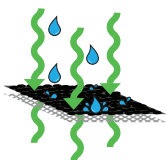
NITRILE PALM COATING

RWG35

S - XL

AQUA^{air}
by RADIANS
Water-Resistant Breathable Coating

- 15 Ga Nylon/Spandex Shell
- Fully Coated Micro Foam Nitrile
- Water-Resistant/Breathable



New AQUA AIR™ Technology Lets Air In While Keeping Water Out, Allowing Hands To Stay Cooler And Perspire Less, Which Increases Comfort.



EN388:2016



4 1 2 1 X

- 4 - Abrasion
- 1 - Coup Test/Cut
- 2 - Tear
- 1 - Puncture
- X - ISO Cut Test

Meets ANSI/ISEA

105:2016



ABRASION

RWG11

S - 2XL

- 15 Ga Gray Nylon Shell
- Micro-Foam Nitrile Palm Dip
- Anti-Slip Nitrile Dotted Coating



Meets ANSI/ISEA

105:2016



ABRASION

EN388:2016



4 1 2 1 X

- 4 - Abrasion
- 1 - Coup Test/Cut
- 2 - Tear
- 1 - Puncture
- X - ISO Cut Test

RWG12

S - 2XL

- 15 Ga Gray Nylon Shell
- 3/4 Micro-Foam Dipped Nitrile
- Anti-slip Nitrile Dotted Coating



Meets ANSI/ISEA

105:2016



ABRASION

EN388:2016



4 1 2 1 X

- 4 - Abrasion
- 1 - Coup Test/Cut
- 2 - Tear
- 1 - Puncture
- X - ISO Cut Test

RWG13

S - 2XL

- 15 Ga Gray Nylon Shell
- Foam Nitrile Palm Coating
- Water-Resistant



Meets ANSI/ISEA

105:2016



ABRASION

EN388:2016



4 1 3 1 X

- 4 - Abrasion
- 1 - Coup Test/Cut
- 3 - Tear
- 1 - Puncture
- X - ISO Cut Test



WARNING: Cancer and reproductive harm - www.P65warnings.ca.gov

RWG13C S-2XL

- 15 Ga Gray Polyester Shell
- Foam Nitrile Palm Coating



4 1 2 1 X
4 - Abrasion
1 - Coup Test/Cut
2 - Tear
1 - Puncture
X - ISO Cut Test

RWG15 S-2XL

- 13 Ga Black Polyester Shell
- Gray Smooth Nitrile Coating



Meets ANSI/ISEA

105:2016

6

ABRASION



3 1 2 1 X
3 - Abrasion
1 - Coup Test/Cut
2 - Tear
1 - Puncture
X - ISO Cut Test

RWG21 S-2XL

- 13 Ga Hi-Vis Yellow Nylon
- Sandy Foam Nitrile Coating
- TPR On Back



Meets ANSI/ISEA

105:2016

6

ABRASION

ANSI / ISEA 138

1



4 - Abrasion
1 - Coup Test/Cut
4 - Tear
1 - Puncture
X - ISO Cut Test
4 1 4 1 X

U.S. Pat. No. 9,241,519

RWG23 S-2XL

- 13 Ga Polyester Shell
- Sandy Foam Nitrile, EVA PADDED PALM
- TPR Back
- Reinforced Thumb Crotch



Meets ANSI/ISEA 105:2016

3

ABRASION

2

PUNCTURE

ANSI / ISEA 138

2



4 - Abrasion
X - Coup Test/Cut
4 - Tear
1 - Puncture
A - ISO Cut Test
4 X 4 1 A

U.S. Pat. No. 9,241,519

COATED GLOVES

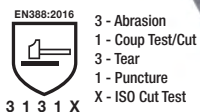


PU/LATEX PALM COATINGS

RWG14

S-2XL

- 13 Ga Gray Polyester Shell
- Gray PU Coating



RWG22

XS-2XL

- 13 Ga Hi-Vis Yellow Polyester
- Yellow PU Coating



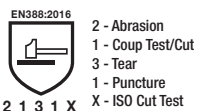
RWG10

S-XL

- 15 Ga Hi-Vis Nylon Shell
- Micro-Foam Latex Coating
- Elastic Cuff



CAUTION
Product Contains Latex

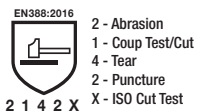


RWG16

S-2XL

- 10 Ga Gray Polyester Shell
- Blue Crinkle Latex Coating

CAUTION
Product Contains Latex



RWG18

S-2XL

- 13 Ga Orange Nylon Shell
- Full Orange Waterproof Latex Coating
- Black Sandy Foam Latex Palm Dip

CAUTION
Product Contains Latex



WARNING: Cancer and reproductive harm - www.P65warnings.ca.gov

COLD WEATHER

RWG17 S-2XL

- 3/4 Dipped Micro Finish Black Latex Coating
- 2 Ply Water-Resistant 13 Ga Orange High Visibility
- Nylon Outer Shell
- 7 Ga Acrylic Terry Liner



CAUTION
Product Contains Latex

EN388:2016
2 - Abrasion
2 - Coup Test/Cut
4 - Tear
1 - Puncture
X - ISO Cut Test
2 2 4 1 X

Meets ANSI/ISEA 105:2016
A2 **3**
CUT/980g ABRASION

RWG27 S-2XL

- 7 ga Hi-Vis Yellow Acrylic Shell
- Blue Crinkle Latex Palm Coating
- Liner: 80% Acrylic 20% Polyester
- EN511-2006 Test Against Cold Contact Achieved Performance Level 2 Thermal Resistance



CAUTION
Product Contains Latex

Meets ANSI/ISEA 105:2016
A3
CUT/1000g
EN511
2 - Abrasion
X - Coup Test/Cut
4 - Tear
1 - Puncture
X - ISO Cut Test
X 2 X
EN388:2016
2 X 4 1 X

RWG28 M-2XL

- 13 Ga Gray Nylon Shell
- 10 Ga Acrylic Liner
- Full Gray Waterproof Latex Coating
- Black Sandy Foam Latex Palm Dip
- EN511-2006 Test Against Cold Contact Achieved Performance Level 2 Thermal Resistance



CAUTION
Product Contains Latex

Meets ANSI/ISEA 105:2016
A2
CUT/736g
EN511
2 - Abrasion
2 - Coup Test/Cut
3 - Tear
2 - Puncture
X - ISO Cut Test
X 2 X
EN388:2016
2 2 3 2 X

RWG604 S-2XL

- 2 Ply 13 Ga Pepper HPPE Outer Shell
- 7 Ga Terry Acrylic Inner Shell
- Black Foam Nitrile Palm Coating
- TPR Overlays on Fingers and Back



ANSI / ISEA 138
1

EN388:2016
4 X 4 4 E P

U.S. Patent No. 9,241,519

Meets ANSI/ISEA 105:2016
A4 **5** **5**
CUT/1785g ABRASION PUNCTURE

RWG605 S-2XL

- 2 Ply 13 Ga Blue and White HPPE Outer Shell
- 7 Ga Acrylic Terry Liner
- Waterproof Blue Smooth Latex Coating
- Black Foam Latex Palm Coating



CAUTION
Product Contains Latex

Meets ANSI/ISEA 105:2016
A4 **5** **5**
CUT/1510g ABRASION PUNCTURE

EN388:2016
4 X 4 3 D
4 - Abrasion
X - Coup Test/Cut
4 - Tear
3 - Puncture
D - ISO Cut Test

RWG800 S-2XL

- REFLECTIVZ™ Waterproof Plated Thermal Lined Palm
- Synthetic Leather Nail Guards
- Reflective Knuckle Strap
- Wraparound Index Finger Seam



WARNING: Cancer and reproductive harm - www.P65warnings.ca.gov

LEATHER GLOVES



LEATHER TANNING/GRADES OF LEATHER

Despite mechanization, leather tanning consists of a complex series of treatments that require considerable time and energy. The purpose of the tanning process is to alter the protein structure of the skin to increase its durability, texture, and appearance. All natural hides are sorted at the tannery and are ranked by quality using a very basic system: A, B, C, D or Economy

- **A GRADE LEATHER:** Has zero blemishes or scar tissue damage
- **B GRADE LEATHER:** May have slight blemishes
- **C GRADE LEATHER:** Visible blemishes and heavy scar tissue damage
- **D OR ECONOMY GRADE LEATHER:** Heavy blemishes, heavy scar tissue, very course or stiff, and normally gray in color



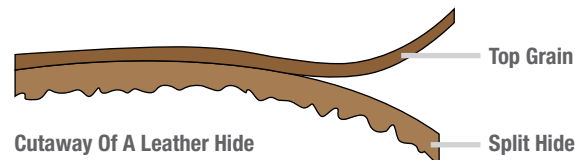
GRAIN VS SPLIT LEATHER

GRAIN LEATHER comes from the top portion of the hide where the hair follicles have been removed. It is smooth to the touch.

SPLIT LEATHER is created by “splitting” the grain leather away from the underside of the hide. Turning one hide into two hides allows for more gloves per square meter to be produced. Split leather is rough to the touch.

Split leather is associated with the thicker hides of larger animals like cows. Smaller animals such as goat or sheep produce top-grain leather only as their hides are not thick enough to split.

If you want longevity, then specify grain leather gloves. If you are trying to outfit or protect temporary workers for intermittent jobs, then split leather gloves offer you cost savings and the necessary hand protection.

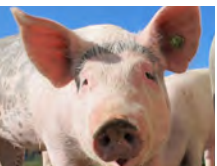


TYPES OF LEATHER



COWHIDE:

- Most common & popular type of leather used for gloves
- Moderately priced
- Durable glove with good abrasion resistance



PIGSKIN:

- Offers greatest breathability due to the porous texture of the hide
- Becomes softer with use
- Withstands moisture without becoming stiff



GOATSKIN:

- Strongest and most durable type of leather
- Excellent abrasion resistance
- Great for tasks that require dexterity

- Warmer than pigskin or goatskin
- Stiffens when it gets wet
- More heat resistant

- Dries soft and stays flexible
- Doesn't lose its shape or function when laundered

- One of the softest leathers available because of its high lanolin content



LEATHER DRIVERS



WHAT IS A LEATHER DRIVER STYLE?

The driver style is most often defined by the material compositions. If the glove is 100% leather on the palm and the backside, it is likely to be considered a driver style.

THE THREE MAJOR LEATHER GLOVE THUMB DESIGNS

The set-in thumb is sewn in as a separate piece, which improves dexterity. Ideal for applications where there is extreme wear in the thumb webbing area. Most expensive option due to extensive sewing.



STRAIGHT THUMB

Least effective as it does not allow for natural thumb motion.



WING THUMB

Allows for greater flexibility and efficiency than straight thumbs.



KEYSTONE THUMB

Designed for superior movement and maximum comfort.

KAMORI SERIES LEATHER DRIVERS



RWG50 S-2XL

- White Grain Goat Skin Driver
- Aramid Lining
- TPR Overlays
- Slip-On Cuff
- Keystone Thumb



U.S. Patent No. 9,241,519

RWG52 S-2XL

- White Grain Goat Skin Driver
- Aramid Lining
- Slip-On Cuff
- Keystone Thumb



3 5 3 4

Meets ANSI/ISEA 105:2016



RWG51 M-2XL

- White Grain Goat Skin Driver
- TPR Overlays
- Slip-On Cuff
- Keystone Thumb



U.S. Patent No. 9,241,519

LEATHER DRIVERS



FEATURED DRIVERS

RWG4722 S-2XL

- Standard Grain Goatskin Leather Driver
- Keystone Thumb
- Shirred Wrist, Cloth Hem



RWG4810 S-XL

- Economy Top Grain Pigskin Leather Driver
- Straight Thumb
- Shirred Wrist, Cloth Hem



RWG4221HV S-2XL

- Standard Grain Cowhide Leather Driver
- Keystone Thumb
- Shirred Wrist, Cloth Hem



LEATHER DRIVERS – COMPLETE LIST

	Part#	Hide	Grade	Thumb	Cuff	Stitching	Liner	Size
GOATSKIN	RWG50	Grain Goatskin	Standard	Keystone	Slip-On	Poly/Cotton	Aramid	S-XXL
	RWG51	Grain Goatskin	Standard	Keystone	Slip-On	Poly/Cotton	-	M-XXL
	RWG52	Grain Goatskin	Standard	Keystone	Slip-On	Poly/Cotton	Aramid	S-XXL
	RWG4710	Grain Goatskin	Economy	Keystone	Slip-On	Poly/Cotton	-	S-XXL
	RWG4720	Grain Goatskin	Standard	Straight	Slip-On	Poly/Cotton	-	S-XXL
	RWG4722	Grain Goatskin	Standard	Keystone	Slip-On	Poly/Cotton	-	S-XXL
PIGSKIN	RWG4740	Grain Goatskin	Premium	Straight	Slip-On	Poly/Cotton	-	S-XXL
	RWG4810	Grain Pigskin	Economy	Straight	Slip-On	Poly/Cotton	-	S-XL
	RWG4821	Grain Pigskin	Standard	Keystone	Slip-On	Poly/Cotton	-	S-XL
	RWG4825	Grain Pigskin	Standard	Straight	Slip-On	Poly/Cotton	White Fleece	S-XL
COWHIDE	RWG4010	Split Cowhide	Economy	Straight	Slip-On	Poly/Cotton	-	S-XXL
	RWG4020	Split Cowhide	Standard	Straight	Slip-On	Poly/Cotton	-	S-XL
	RWG4025	Split Cowhide	Standard	Straight	Slip-On	Poly/Cotton	Red Fleece	S-XXL
	RWG4120	Grain Cowhide	Economy	Straight	Slip-On	Poly/Cotton	-	S-XXL
	RWG4121	Grain Cowhide	Economy	Wing	Slip-On	Poly/Cotton	-	S-XXL
	RWG4122	Grain Cowhide	Economy	Keystone	Slip-On	Poly/Cotton	-	S-XXL
	RWG4220	Grain Cowhide	Standard	Keystone	Slip-On	Poly/Cotton	-	S-XXXL
	RWG4220H	Grain Cowhide w/Hi-Vis Fingertips	Standard	Keystone	Slip-On	Poly/Cotton	-	S-XXL
	RWG4221	Grain Cowhide	Standard	Keystone	Pull Strap	Poly/Cotton	-	S-XXL
	RWG4221HV	Grain Cowhide w/Hi-Vis Fingertips & Logo	Standard	Keystone	Slip-On	Poly/Cotton	-	S-XXL
	RWG4225	Grain Cowhide	Standard	Keystone	Slip-On	Poly/Cotton	Red Fleece	S-XXL
	RWG4420	Grain Cowhide	Premium	Keystone	Slip-On	Poly/Cotton	-	S-XXL
	RWG4425	Grain Cowhide	Premium	Keystone	Slip-On	Poly/Cotton	40g Thinsulate®	S-XXL
	RWG4222	Grain Cowhide / Split Cowhide Back	Standard	Keystone	Slip-On	Poly/Cotton	-	S-XXL
	RWG4421	Grain Cowhide / Split Cowhide Back	Premium	Keystone	Slip-On	Kevlar®	-	S-XXL



⚠ WARNING: Cancer and reproductive harm - www.P65warnings.ca.gov

WHAT IS A LEATHER PALM STYLE?

Both the shape and the materials used in the glove help to identify it as a leather palm. If the glove is 100% leather on the palm but the top of hand is fabric, it is likely a "leather palm." Safety cuffs are also common features on leather palm gloves.

NOTE: There have been advances in glove design recently that combine features and benefits from drivers, leather palms, and performance gloves. This category is recognized as a hybrid style. To determine a leather palm from a hybrid, look for a "rubberized or starched safety cuff." If the glove has a rubberized or starched safety cuff, then it is a leather palm.

FORM FACTOR

90% of leather palms are made from split cowhide. Wearing split cowhide leather palm gloves is popular at large jobsites that require employees to wear hand protection but have limited budgets. It is a general purpose, low cost glove used in applications that don't require good dexterity. Pigskin has a greater resistance to water and abrasion and is used mostly in cold weather climates.

CUFF STYLES



STARCHED

Two layers of fabric laminated & stiffened with starch



DUCK CUFF

Launderable single ply cotton material



RUBBERIZED

Bonding of cuff layers with rubber cement. Standard safety cuff 2.5"



GAUNTLET

4 - 5" longer cuff to provide extra protection up the wrist & arm



KNIT

Elastic around wrist to keep dust & debris from entering glove

FEATURED LEATHER PALMS

RWG3700 M - XL

- Premium Grain Goatskin Leather Palm
- Gunn Cut w/ Wing Thumb
- Leather Knuckle Strap
- Rubberized Safety Cuff



RWG3103 S - 2XL

- Economy Shoulder Gray Split Cowhide Leather palm
- Gunn cut w/wing thumb
- Leather Knuckle Strap
- Rubberized Safety Cuff



RWG3825 L - XL

- Standard Grain Pigskin Leather Palm
- Gunn Cut w/Wing Thumb
- 150 Gram Micro Fleece Lined
- Leather Knuckle Strap
- 4" Knit Wrist



FEATURED LEATHER PALMS

RWG3200JP M-2XL

- Regular Shoulder Gray Split Cowhide Joint Leather Palm
- Gunn Cut w/ Wing Thumb
- Leather Knuckle Strap
- Rubberized Safety Cuff



RWG3300 M-XL

- Select Shoulder Gray Split Cowhide Palm
- Gunn Cut w/ Wing Thumb
- Leather Knuckle Strap
- Rubberized Safety Cuff



RWG3400WDP M-XL

- Side Split Gray Cowhide Double Palm
- Gunn Cut w/ Wing Thumb
- Canvas Back
- Leather Knuckle Strap
- Aramid Thread
- Rubberized Safety Cuff



LEATHER PALM GLOVES – COMPLETE LIST

	Part	Hide	Grade	Cut	Palm	Back	Color	Cuff	Stitching	Liner	Size
GOATSKIN	RWG3700	Grain Goatskin	Premium	Gunn	Single	Canvas	Red	Rubberized Safety	Poly/Cotton	-	M-XL
	RWG3825	Grain Pigskin	Standard	Gunn	Single	Canvas	Blue/Black	Knit Wrist	Poly/Cotton	150g Micro Fleece	L-XL
	RWG3840	Grain Pigskin	Premium	Gunn	Single	Canvas	Blue/Red	Rubberized Safety	Poly/Cotton	-	M-XL
PIGSKIN	RWG3010	Split Cowhide	Economy	Clute	Single	Canvas	Blue/Red	Knit Wrist	Poly/Cotton	-	L
	RWG3012	Split Cowhide	Economy	Clute	Single	Canvas	Blue/Red	Knit Wrist	Poly/Cotton	-	Ladies L
	RWG3103	Split Cowhide	Economy	Gunn	Single	Canvas	Red/Grey	Rubberized Safety	Poly/Cotton	-	S-XXL
	RWG3103G	Split Cowhide	Economy	Gunn	Single	Canvas	Red/Grey	Rubberized Gauntlet	Poly/Cotton	-	L
	RWG3105	Split Cowhide	Economy	Gunn	Single	Canvas	Red/Grey	Rubberized Safety	Poly/Cotton	Red Fleece	L
	RWG3110	Split Cowhide	Economy	Gunn	Patch	Denim	Navy	Denim Safety	Poly/Cotton	-	L
	RWG3111	Split Cowhide	Economy	Gunn	Single	Canvas	Blue/Red	Starched Safety	Poly/Cotton	-	L
	RWG3200	Split Cowhide	Shoulder	Gunn	Single	Canvas	Blue/Red	Rubberized Safety	Poly/Cotton	-	S-XXL
	RWG3200G	Split Cowhide	Shoulder	Gunn	Single	Canvas	Blue/Red	Rubberized Gauntlet	Poly/Cotton	-	L
	RWG3200DP	Split Cowhide	Shoulder	Gunn	Double	Canvas	Blue/Red	Rubberized Safety	Poly/Cotton	-	L-XL
	RWG3200HV	Split Cowhide	Shoulder	Gunn	Single	Nylon	Hi-Vis Orange	Rubberized Safety	Poly/Cotton	-	L-XL
	RWG3200JP	Split Cowhide	Shoulder	Gunn	Joint	Canvas	Blue/Red	Rubberized Safety	Poly/Cotton	-	M-XXL
	RWG3200W	Split Cowhide	Shoulder	Gunn	Single	Canvas	White	Washable Duck	Poly/Cotton	-	M-XXL
	RWG3205	Split Cowhide	Shoulder	Gunn	Single	Canvas	Blue/Red	Rubberized Safety	Poly/Cotton	40g Thinsulate®	M-XXL
	RWG3206	Split Cowhide	Shoulder	Gunn	Single	Leather	Grey	Rubberized Safety	Poly/Cotton	-	L
	RWG3210	Grain Cowhide	Shoulder	Gunn	Single	Canvas	Blue/Black	Rubberized Safety	Poly/Cotton	-	S-XXL
	RWG3300	Split Cowhide	Select Shoulder	Gunn	Single	Canvas	Green/Pink	Rubberized Safety	Poly/Cotton	-	M-XL
COWHIDE	RWG3300G	Split Cowhide	Select Shoulder	Gunn	Single	Canvas	Green/Pink	Rubberized Gauntlet	Poly/Cotton	-	M-XL
	RWG3400W	Split Cowhide	Side Split	Gunn	Single	Canvas	White	Rubberized Safety	Aramid	-	M-XXL
	RWG3400WG	Split Cowhide	Side Split	Gunn	Single	Canvas	White	Rubberized Gauntlet	Aramid	-	M-XL
	RWG3400WDP	Split Cowhide	Side Split	Gunn	Double	Canvas	White	Rubberized Safety	Aramid	-	M-XL
	RWG3400WDPG	Split Cowhide	Side Split	Gunn	Double	Canvas	White	Rubberized Gauntlet	Aramid	-	M-XL

RWG5100 XL

- Gray Split Economy Shoulder Cow Leather
- Fleece Cotton Drill Lining
- Wing Thumb
- 14" 1 piece Back

Also Available Left Hand Only (RWG5100LH)



RWG5210 XL

- Blue Regular Shoulder, Split Leather
- Full Sock Jersey Lined
- Wing Thumb, Reinforced Palm
- 14" Fully Weltd Seams
- Aramid Sewn



RWG5410 XL

- Premium Side Split Blue Cowhide Leather
- Full Sock Lining With Foam
- Reinforced Palm
- Wing Thumb
- 14" Fully Weltd Seams
- Aramid Sewn



RWG5310 XL

- Select Split Brown Cowhide Leather
- Full Sock Lining With Foam
- Reinforced Palm
- Wing Thumb
- 14" Fully Weltd Seams
- Aramid Sewn



MIG/TIG WELDING GLOVES

RWG6210 M-2XL

- Mig-Tig Regular Grain Cowhide
- Seamless Forefinger
- Wing Thumb
- 4" Blue Regular Split Shoulder Cuff
- Aramid Sewn



RWG6310 M-2XL

- Mig-Tig Select Grain Cowhide
- Seamless Forefinger
- Wing Thumb
- 4" Brown Regular Split Shoulder Cuff
- Aramid Sewn



RWG6710 M-2XL

- Mig-Tig Select Grain Goatskin
- Seamless Forefinger
- Wing Thumb
- 4" Brown Regular Split Shoulder Cuff
- Aramid Sewn



CUT PROTECTION GLOVES

ANSI CUT LEVEL RATINGS

There are many kinds of cut hazards, and each one requires a different level of protection. Use the table below to help determine the cut level rating necessary for your work environment.



LIGHT CUT HAZARDS:

material handling, assembly, maintenance, packaging, warehouse, general purpose, construction

200 - 499 grams



LIGHT/MEDIUM CUT HAZARDS:

material handling, assembly, maintenance, packaging, warehouse, general purpose, construction, metal handling, appliance manufacturing

500 - 999 grams



LIGHT/MEDIUM CUT HAZARDS:

material handling, assembly, maintenance, packaging, warehouse, general purpose, construction, metal handling, appliance manufacturing

1000 - 1499 grams



MEDIUM CUT HAZARDS:

bottle and light glass handling, canning, dry walling, electrical, carpet installation, HVAC, paper production, automotive assembly, metal handling, metal stamping, packaging, warehouse, appliance manufacturing

1500 - 2199 grams



MEDIUM CUT HAZARDS:

bottle and light glass handling, canning, dry walling, electrical, carpet installation, HVAC, paper production, automotive assembly, metal handling, metal stamping, packaging, warehouse, appliance manufacturing

2200 - 2999 grams



MEDIUM/HEAVY CUT HAZARDS:

bottle and light glass handling, canning, dry walling, electrical, carpet installation, HVAC, paper production, automotive assembly, metal handling, metal stamping, packaging, warehouse, appliance manufacturing

3000 - 3999 grams



MEDIUM/HEAVY CUT HAZARDS:

bottle and light glass handling, canning, dry walling, electrical, carpet installation, HVAC, paper production, automotive assembly, metal handling, metal stamping, packaging, warehouse, appliance manufacturing, meat processing

4000 - 4999 grams



HEAVY CUT HAZARDS:

bottle and light glass handling, canning, dry walling, electrical, carpet installation, HVAC, paper production, automotive assembly, metal handling, metal stamping, packaging, warehouse, appliance manufacturing, meat processing

5000 - 5999 grams



HEAVY CUT HAZARDS:

bottle and light glass handling, canning, dry walling, electrical, carpet installation, HVAC, paper production, automotive assembly, metal handling, metal stamping, packaging, warehouse, appliance manufacturing, meat processing

6000+ grams



TEKTYE™ by RADIANS®

This engineered yarn can get to an ANSI cut level of A4 **WITHOUT THE USE OF FIBERGLASS OR STAINLESS STEEL.**

Provides more comfort and dexterity vs HPPE with Fiberglass or Stainless Steel.

Cost effective option for higher cut levels.

WHY IS THIS IMPORTANT?

When Glass Fiber or Stainless Steel is used in the shell over time those fibers will break. This not only causes possible irritation to the skin in the areas of the break but also in that exact spot of the breakage the glove is no longer an A4 but rather closer to an A2.

RWG713 S-2XL

- 13 Ga Tektye™ A4 (Fiberglass And Stainless Steel Free)
- FDG® Palm Coating
- Reinforced Thumb Crotch



EN388:2016
4 - Abrasion
X - Coup Test/Cut
4 - Tear
3 - Puncture
4 X 4 3 D D - ISO Cut Test

Meets ANSI/ISEA 105:2016



RWG718 S-2XL

- 18 Ga Tektye™ A4 (Fiberglass And Stainless Steel Free)
- FDG® Palm Coating
- Touchscreen



EN388:2016
4 - Abrasion
X - Coup Test/Cut
4 - Tear
2 - Puncture
4 X 4 2 D D - ISO Cut Test

Meets ANSI/ISEA 105:2016



RWG701 S-2XL

- 13 Ga Tektye™ A4 (Fiberglass And Stainless Steel Free)
- PU Palm Coating
- Touchscreen



EN388:2016
4 - Abrasion
X - Coup Test/Cut
4 - Tear
3 - Puncture
4 X 4 3 D D - ISO Cut Test

Meets ANSI/ISEA 105:2016



RWG705 S-2XL

- 13 Ga Tektye™ A4 (Fiberglass And Stainless Steel Free)
- Foam Nitrile Palm Coating
- Reinforced Thumb Crotch



EN388:2016
4 - Abrasion
X - Coup Test/Cut
4 - Tear
3 - Puncture
4 X 4 3 D D - ISO Cut Test

Meets ANSI/ISEA 105:2016



RADIANS®

CUT PROTECTION GLOVES

RWG530 S-2XL

- 13 Ga Salt and Pepper HPPE Shell
- Polyurethane Coating



3 X 4 2 A
3 - Abrasion
X - Coup Test/Cut
4 - Tear
2 - Puncture
A - ISO Cut Test

Meets ANSI/ISEA 105:2016



RWG531 S-2XL

- Materials Compliant with FDA 21 CFR 177.152
- 13 Ga Hi-Vis Yellow HPPE Shell
- Water Based PU Coating



Made with
FDA accepted
material for use in
food processing

Individually Polybagged



4 3 4 4
4 - Abrasion
3 - Cut
4 - Tear
4 - Puncture

Meets ANSI/ISEA 105:2016



A2 CUT PROTECTION

RWG532 S-2XL

- Touchscreen
- 13 Ga Black HPPE Shell
- Foam NBR Palm Coating



Individually Polybagged

Meets ANSI/ISEA 105:2016



4 3 4 3
4 - Abrasion
3 - Cut
4 - Tear
3 - Puncture

RWG533 XS-2XL

- 18 Ga Green HPPE Shell
- Sandy Foam Nitrile Palm Coating



4 3 4 1
4 - Abrasion
3 - Cut
4 - Tear
1 - Puncture

Meets ANSI/ISEA 105:2016



WARNING: Cancer and reproductive harm - www.P65warnings.ca.gov

A2/A3 CUT PROTECTION

RWG538 XS-2XL

- 18 Ga Green HPPE Outer Shell
- Black Foam Nitrile Palm Coating With Dots
- Reinforced Thumb Crotch



Meets ANSI/ISEA 105:2016

A2	4	2
CUT/796g	ABRASION	PUNCTURE

EN388:2003

4	3	4	1
4 - Abrasion	3 - Cut	4 - Tear	1 - Puncture

RWG550 XS-2XL

- 13 Ga White HPPE Shell
- Polyurethane Dip



Meets ANSI/ISEA 105:2016

A2	6	4
CUT/548g	ABRASION	PUNCTURE

EN388:2016

4	X	4	3	B
4 - Abrasion	X - Coup Test/Cut	4 - Tear	3 - Puncture	B - ISO Cut Test

Individually Polybagged

RWG561 XS-2XL

- 18 Ga Gray HPPE
- Black PU Coating



Meets ANSI/ISEA 105:2016

A2	4	3
CUT/914g	ABRASION	PUNCTURE

EN388:2016

3	X	4	1	B
3 - Abrasion	X - Coup Test/Cut	4 - Tear	1 - Puncture	B - ISO Cut Test

RWG562 S-2XL

- 13 Ga Salt N Pepper HPPE
- Gray PU Palm Coating



Meets ANSI/ISEA 105:2016

A3	5	4
CUT/1110g	ABRASION	PUNCTURE

EN388:2016

4	X	4	3	C
4 - Abrasion	X - Coup Test/Cut	4 - Tear	3 - Puncture	C - ISO Cut Test

CUT PROTECTION



A4 CUT PROTECTION

RWG555 XS-2XL

- 13 Ga Salt-N-Pepper HPPE Shell W/Fiberglass
- Foam Nitrile Palm Coating



Meets ANSI/ISEA 105:2016

A4	4	5
CUT/1550g	ABRASION	PUNCTURE

4 X 4 4 D
 4 - Abrasion
 X - Coup Test/Cut
 4 - Tear
 4 - Puncture
 D - ISO Cut Test

RWG557 S-2XL

- 13 Ga Orange High Tenacity Nylon W/Fiberglass
- Black PU Palm Coating



Meets ANSI/ISEA 105:2016

A4	1	4
CUT/1522g	ABRASION	PUNCTURE

4 5 4 3
 4 - Abrasion
 5 - Cut
 4 - Tear
 3 - Puncture

RWG560 XS-2XL

- 13 Ga Gray HPPE W/Fiberglass
- Black PU Palm Coating



Meets ANSI/ISEA 105:2016

A4	6	5
CUT/1826g	ABRASION	PUNCTURE

4 X 4 2 D
 4 - Abrasion
 X - Coup Test/Cut
 4 - Tear
 2 - Puncture
 D - ISO Cut Test

RWG564 S-2XL

- 13 Ga Hi-Vis Green HPPE W/Fiberglass
- Foam Nitrile Palm Coating



Meets ANSI/ISEA 105:2016

A4	6	4
CUT/2187g	ABRASION	PUNCTURE

4 X 4 2 D
 4 - Abrasion
 X - Coup Test/Cut
 4 - Tear
 2 - Puncture
 D - ISO Cut Test

RWG566 XS-2XL

- 18 Ga Gray HPPE with Stainless Steel
- Black PU Palm Coating
- Touchscreen



Meets ANSI/ISEA 105:2016

A4	2	2
CUT/1910g	ABRASION	PUNCTURE

4 5 2 1
 4 - Abrasion
 5 - Cut
 2 - Tear
 1 - Puncture

WARNING: Cancer and reproductive harm - www.P65warnings.ca.gov

A5+ CUT PROTECTION

RWG603 S-2XL

- 13 Ga Pepper HPPE Shell W/ Fiberglass
- Sandy Foam Nitrile Palm Coating
- TPR Overlays



Individually Polybagged
U.S. Patent No. 9,241,519

Meets ANSI/ISEA 105:2016



RWG603R S-2XL

- 13 Ga Pepper HPPE Shell W/ Fiberglass
- Sandy Foam Nitrile Palm Coating
- Reinforced Thumb Crotch
- TPR Overlays



Individually Polybagged
U.S. Patent No. 9,241,519

Meets ANSI/ISEA 105:2016



RWG609 S-2XL

- 13 Ga Hppe/Stainless Steel
- Sandy Foam Nitrile, EVA PADDED PALM
- Reinforced Thumb Crotch
- TPR Overlays



U.S. Patent No. 9,241,519

Meets ANSI/ISEA 105:2016



4 X 4 2 E
4 - Abrasion
X - Coup Test/Cut
4 - Tear
2 - Puncture
E - ISO Cut Test

RWG535 S-2XL

- 13 Ga HPPE/Stainless Steel Shell
- Foam NBR Palm Coating
- Reinforced Thumb Crotch
- Touchscreen



Meets ANSI/ISEA 105:2016



4 X 4 3 E
4 - Abrasion
X - Coup Test/Cut
4 - Tear
3 - Puncture
E - ISO Cut Test

RWG558 XS-2XL

- 13 Ga Hi-Vis Green HPPE w/ Fiberglass and Stainless Steel
- Black PU Palm Coating



Meets ANSI/ISEA 105:2016



4 X 4 3 F
4 - Abrasion
X - Coup Test/Cut
4 - Tear
3 - Puncture
D - TDM-100

RWG559 XS-2XL

- 13 Ga Hi-Vis Orange HPPE w/ Fiberglass and Stainless Steel
- Black Sandy Foam Nitrile Palm Coating



Meets ANSI/ISEA 105:2016



4 5 4 4
4 - Abrasion
5 - Cut
4 - Tear
4 - Puncture

CUT PROTECTION GLOVES

WORLD'S MOST ADVANCED CUT RESISTANT FIBER

Dyneema® Diamond Technology offers maximum protection over traditional materials like aramid, leather, nylon and polyethylene with glass fiber.

It can achieve levels B, C and D based on the latest EN388 2016 standard and levels A2, A3 and A4 on the new ANSI/ISEA 105:2016 standard without the use of glass or steel fiber reinforcement, which may break during use causing skin irritation.

GREATER COMFORT & DEXTERITY

Dyneema® Diamond Technology fibers are thinner than generic HMPE fibers and 40% less dense than aramid fibers, making them more comfortable, thinner and cooler to the touch, while still providing advanced cut protection.

It also promotes skin-like dexterity, allowing users to perform delicate and precise tasks efficiently.



RWGD100 XS-2XL

- 15 Ga Speckled Hi-Viz Yellow Shell
- Black PU Palm Coating
- Touchscreen



Individually Polybagged

Meets ANSI/ISEA 105:2016



3 5 4 4
3 - Abrasion
5 - Cut
4 - Tear
4 - Puncture

RWGD101 XS-2XL

- 13 Ga Light Gray Shell
- Gray PU Palm Coating



Individually Polybagged

Meets ANSI/ISEA 105:2016



4 X 4 2 C
4 - Abrasion
X - Coup Test/Cut
4 - Tear
2 - Puncture
C - ISO Cut Test

RWGD104 S-2XL

- 13 Ga Blue Speckled Shell
- Black PU Palm Coating
- Touchscreen



Individually Polybagged

Meets ANSI/ISEA 105:2016



4 5 4 3
4 - Abrasion
5 - Cut
4 - Tear
3 - Puncture

RWGD106 S-2XL

- 13 Ga Salt-N-Pepper Shell
- Black Foam Nitrile Palm Coating



4 - Abrasion
5 - Cut
4 - Tear
4 - Puncture
4 5 4 4

Individually Polybagged

Meets ANSI/ISEA 105:2016



RWGD110 S-2XL

- 13 Ga Salt-N-Pepper Shell
- Black Foam Nitrile Palm Coating
- TPR Overlays



4 - Abrasion
5 - Cut
4 - Tear
4 - Puncture
4 5 4 4

Individually Polybagged

Meets ANSI/ISEA 105:2016



U.S. Patent No. 9,241,519

Dyneema® is a registered trademark of DSM. Use of this trademark is prohibited unless strictly authorized.

WARNING: Cancer and reproductive harm - www.P65warnings.ca.gov

CUT PROTECTION SLEEVES



Radians Sleeves with DuPont™ Kevlar®

Cut-and heat-resistant technology protect arms and wrists from cuts, slashes, punctures, and offer light heat resistance too.

Kevlar® is a synthetic, lightweight, heat-resistant fiber that is incredibly strong, delivering a high tensile strength-to-weight ratio. Kevlar® is also inherently flame resistant—its fibers won't melt, drip, or support combustion.

In addition to the excellent cut- and heat-protection benefits of Radians Sleeves, they're lightweight and comfortable too, making them an ideal choice for long wear when both cut and thermal hazards are present at the jobsite. Available in 1-ply and 2-ply.

- **A2 OR A3 CUT PROTECTION**
- **14" OR 18" LENGTH**
- **WITH OR WITHOUT THUMBHOLE**

Meets ANSI/ISEA 105:2016		SLEEVES – COMPLETE LIST				
		Part	Ply	ANSI Cut Protection	Length	Thumbhole
A2	A2 CUT PROTECTION	RAD5114K	1-Ply	A2 Cut Protection	14"	No
		RAD5114KTS	1-Ply	A2 Cut Protection	14"	Yes
		RAD5118K	1-Ply	A2 Cut Protection	18"	No
		RAD5118KTS	1-Ply	A2 Cut Protection	18"	Yes
A3	A3 CUT PROTECTION	RAD5214K	2-Ply	A3 Cut Protection	14"	No
		RAD5214KTS	2-Ply	A3 Cut Protection	14"	Yes
		RAD5218K	2-Ply	A3 Cut Protection	18"	No
		RAD5218KTS	2-Ply	A3 Cut Protection	18"	Yes



RAD5114KTS



RAD5114K

DuPont™, the DuPont Oval Logo, and all trademarks and service marks denoted with ™, ™ or ® are owned by affiliates of DuPont de Nemours, Inc. unless otherwise noted. 2021 DuPont.

WARNING: Cancer and reproductive harm - www.P65warnings.ca.gov

sales@radians.com | www.radians.com | 877-723-4267

DEWALT

JOB SITE TOUGH

DEWALT has always had the toughest tools to help you get the job done. DEWALT Work Gloves help get the job done in comfort while providing tough protection for your hands.

Whatever the demand, DEWALT Performance Work Gloves are designed to meet it.



WORK GLOVES

PAGE
25

Cut protection gloves available with ANSI-ISEA A2-A4 level cut protection

CUT PROTECTION



PAGE
26

Coated palm gloves are available with a variety of textures to fulfill your workplace needs

COATED PALM



PAGE
27

DEWALT provides a great selection of quality performance gloves for a broad range of applications

PERFORMANCE



PAGE
29

Leather gloves are an excellent option when it comes to many work scenarios

LEATHER



PAGE
30

When looking for cold weather gloves, look no further than DEWALT

COLD WEATHER



OTHER
PPE
AVAILABLE

Check out the Radians Industrial Catalog for more



⚠ WARNING: Cancer and reproductive harm - www.P65warnings.ca.gov



DEWALT

CUT PROTECTION GLOVES

DPG833 S-2XL

- 18 Ga High Visibility HPPE Shell
- Foam Nitrile Palm Coating
- Reinforced Thumb Crotch
- Touchscreen



EN388:2016



4 X 4 1 B
4 - Abrasion
X - Coup Test/Cut
4 - Tear
1 - Puncture
B - TDM-100 Test

Meets ANSI/ISEA 105:2016



DPG855 S-2XL

- 13 Ga High Visibility HPPE Shell With Fiberglass
- Foam Nitrile Palm Coating
- Reinforced Thumb Crotch



EN388:2016



4 X 4 2 D
4 - Abrasion
X - Coup Test/Cut
4 - Tear
2 - Puncture
D - TDM-100 Test

Meets ANSI/ISEA 105:2016



Black Foam Nitrile

Durable & Washable
For Long Lasting Protection



Radiates Heat Away
To Help Keep You Cool

13 Ga Gray Speckled

DPGD809 L-XL

Meets ANSI/ISEA 105:2016



EN388:2003



4 - Abrasion
5 - Cut
4 - Tear
3 - Puncture

4 5 4 3

Individually Polybagged

WARNING: Cancer and reproductive harm - www.P65warnings.ca.gov

sales@radians.com | www.radians.com | 877-723-4267

DEWALT

COATED PALM GLOVES

DPG35**S-XL**

- 15 Ga Nylon/Spandex Shell
- Fully Coated Micro Foam Nitrile
- Water-Resistant/Breathable

Meets ANSI/ISEA
105:2016

- 4 - Abrasion
1 - Coup Test/Cut
2 - Tear
1 - Puncture
X - ISO Cut Test

EN388:2016



4 1 2 1 X

DPG70**M-XL**

- 10 Ga Breathable Knit Back
- Textured Rubber Palm
- Ergonomic Design
- Seamless Fit

EN388:2016



- 2 1 4 2 X
2 - Abrasion
1 - Coup Test/Cut
4 - Tear
2 - Puncture
X - ISO Cut Test

**CAUTION**
Product Contains Latex**DPG76****L-XL**

- 15 Ga Breathable Knit Back
- Textured Nitrile Palm
- Ultradex® Tread Grip
- Ergonomic Design
- Seamless Fit

**DPG73****L**

- 13 Ga Breathable Poly Shell
- Ultradex® Smooth Nitrile Coating
- Elastic Cuff

Tagged Pairs: DPG73TL
Three Pack: DPG73-3PK

EN388:2016



- 3 1 2 1 X
4 - Abrasion
1 - Coup Test/Cut
2 - Tear
1 - Puncture
X - ISO Cut Test

**DPG72****S-2XL**

- 13 Ga Nylon Shell
- Double Dipped Flexible Durable Grip Coating
- Water and Oil Resistant

EN388:2016



- 4 1 3 1 X
4 - Abrasion
1 - Coup Test/Cut
3 - Tear
1 - Puncture
X - ISO Cut Test

**WARNING:** Cancer and reproductive harm - www.P65warnings.ca.gov

PERFORMANCE GLOVES

DPG212 M - XL

- Rugged Reverse Leather Overlays
- Premium Grade Cowhide Leather
- Reinforced Thumb Saddle
- Neoprene Knuckle Guard
- Terry Cloth Brow Wipe



DPG216 L - XL

- Split Cowhide Leather Palm Overlay
- Breathable Spandex Back
- Reinforced Thumb Saddle



DPG217 M - XL

- Foam Padded Knuckle
- Rubberized Overlays
- SecureFit™ Wrist Closure



DPG218 M - XL

- Reinforced Finger & Thumb
- Foam Padded Palm
- Lightweight & Breathable
- Short Slip-On Cuff
- Foam Padded Knuckle



EN388:2016



3 1 1 1 A

3 - Abrasion
1 - Coup Test/Cut
1 - Tear
1 - Puncture
A - ISO Cut Test

DPG222 L - XL

- Hi-Dex Nubuck Palm
- Foam Padded Palm
- Reinforced Fingers and Thumb
- RapidFit™ Slip-On Cuff



DPG870 M - XL

- Rubberized Grip Overlays
- High Visibility Green Back
- Silver Reflective Tape
- RapidFit™ Slip-On Cuff



DPG20 M - XL

- ToughGrip™ Thumb Saddle
- Padded Palm & Knuckle
- Elastic Wrist Strap
- Neoprene Knuckle
- Reinforced Fingertips
- Terry Cloth Brow Wipe



WARNING: Cancer and reproductive harm - www.P65warnings.ca.gov

PERFORMANCE GLOVES

DEWALT

DPG200 M-2XL

- Water & Oil Resistant Foam Padded Palm
- Reinforced Fingers & Thumb
- Neoprene Knuckle Guard
- Durable Double Stitching
- UlnaLock™ Secure Fit Wrist



DPG201 M-XL

- Synthetic Leather Padded Palm and Finger Tips
- Spandex/Polyester Back
- PVC reinforced thumb crotch
- SecureFit™ Wrist Closure
- Spandex Fourchettes



DPG210 M-XL

- Memory Gel Padded Palm
- Water/Oil Resistant PVC Overlays
- Reinforced Fingers & Thumb
- UlnaLock™ Secure Fit Wrist



EN388:2016

 2 - Abrasion
 1 - Coup Test/Cut
 2 - Tear
 1 - Puncture
 X - ISO Cut Test
 2 1 2 1 X

DPG211 M-XL

- Foam Padded Synthetic Leather Palm
- Spandex/Mesh Back
- Foam Padded Knuckle
- Neoprene Wrist with TPR Pull Strap
- Flexible Polyester Fourchettes
- 4 point finger tips



DPG230 M-XL


- High-Dexterity Fingerless Design
- Double Palm Overlay
- Neoprene Knuckle Guard
- Terry Cloth Brow Wipe
- ToughThread™ Double Stitching



DPG250 M-2XL

- Premium Goatskin Leather Palm with Vibration Reducing Memory Gel Padding
- Padded Knuckle Guard
- Reinforced Fingers & Thumb
- Terry Cloth Brow Wipe



EN388:2016

 2 - Abrasion
 1 - Cut
 X - Tear
 X - Puncture
 2 1 X X



WARNING: Cancer and reproductive harm - www.P65warnings.ca.gov



DEWALT

LEATHER GLOVES

DPG780 M - XL

- Tacky Silicone Fingertip Grips
- PVC Palm Grip Overlays
- TPR Knuckle Guards*
- Reinforced Fingers & Thumb
- Terry Cloth Brow Wipe



U.S. Patent No. 9,241,519

DPG41 L

- Split Leather Knuckle Strap
- 2 1/2" Rubberized Cuff
- Double Leather Palm



DPG31 L - XL

- Goatskin Leather
- Elasticized Wrist
- Keystone Thumb
- ToughThread™ Double Stitching



DPG781 M - XL

- Padded PVC Palm
- TPR Impact Guards*
- PVC Fingertip Grips
- SecureFit™ Wrist Closure
- Thumb Saddle Reinforcements



DPG32 M - XL

- Split Leather Palm Overlay
- Elasticized Wrist
- Keystone Thumb



WARNING: Cancer and reproductive harm - www.P65warnings.ca.gov

COLD WEATHER GLOVES

DEWALT

DPG737 M-2XL

- 2-in-1 CWS™ Thermal Gripper
- Wicking Nylon Outer Shell
- Acrylic Thermal Liner
- Microfoam Latex ¾ Dip & Palm



CAUTION
Product Contains Latex

EN388:2016
2 - Abrasion
2 - Coup Test/Cut
4 - Tear
1 - Puncture
X - ISO Cut Test

Meets ANSI/ISEA 105:2016

A2 **2**
CUT ABRASION

DPG740 M-XL

- Mild Condition Fleece
- Wind/Water Resistant Shell
- Palm & Finger Overlays
- Reinforced Thumb Saddle



DPG748 L-XL

- Extreme Condition Insulated
- Water-Resistant
- Palm & Finger Overlays
- 40G Polyester Thermal Lined
- Rubber Pull Tab



DPG750 M-2XL

- Extreme Condition Insulated
- Wind & Waterproof, Quad Layer, 100g Micro Fleece Liner
- Extended Gauntlet Cuff with Hook & Loop
- Reinforced, Water and Oil Resistant PVC Palm Overlay
- Durable PU Coated Polyester Shell
- Neoprene Knuckle



DPG755 L-XL

- Waterproof Insulated
- 40G Thinsulate™ / Polyurethane Liner
- Dual Layer Thumb Saddle
- Durable Outer Shell
- Neoprene Knuckle Guard & Wrist
- Rubberized Grip Overlays



Thinsulate
INSULATION

WARNING: Cancer and reproductive harm - www.P65warnings.ca.gov



RADIANS

bellingham®
GLOVE

OTHER STYLES

RWG122 S-2XL

- Cotton Corded Palm
- TPR on Back and Fingers
- Thumb Crotch and Pinch Guard



Meets ANSI/ISEA
105:2016
A2
CUT/900g

ANSI / ISEA 138
1

U.S. Pat. No. 9,241,519

RWG100 M-2XL

- Padded Double Layer Synthetic Palm
- Reinforced and Reflective Fingertips
- Easy Fit Open Cuff Design
- Silver Reflective Tape
- Reflective Pull Strap



6601 S-2XL



- Triple Dipped PVC/Nitrile Coating
- Tough 13 Ga Liner Adds Strength
- Textured Palm, 12" Gauntlet



4601 S-XL

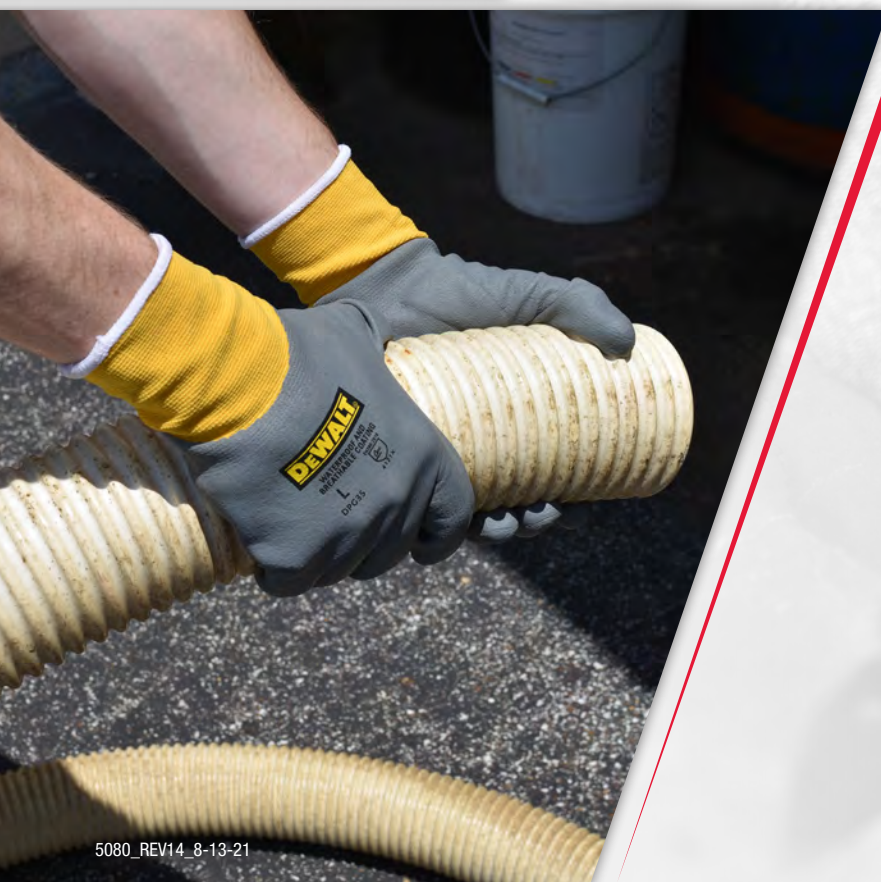


- Durable PVC/Nitrile Coating
- Soft Acrylic Fleece Liner
- Textured Palm



⚠ WARNING: Cancer and reproductive harm - www.P65warnings.ca.gov

sales@radians.com | www.radians.com | 877-723-4267



RADIANS®

HEADQUARTERS

5305 Distriplex Farms Drive
Memphis, Tennessee 38141

Toll Free: 877-723-4267

Phone: 901-388-7776

Fax: 901-266-2558

Email: sales@radians.com

WWW.RADIANS.COM